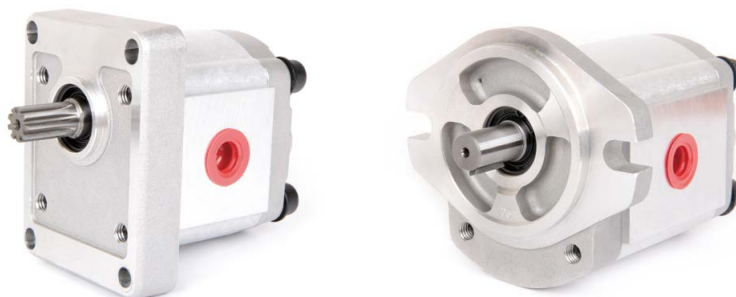


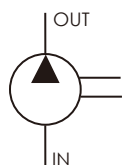
HGP Series Gear Pump

HGP-3A

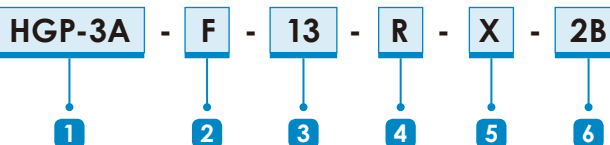
- ▶ Displacement : 2~35 cc/rev
- ▶ Max. Pressure : 250 kgf/cm²
(3500psi)
- ▶ Flange : SAE 2-bolt, DIN 4-bolt,
European 4-bolt



SCHEMATIC SYMBOL



ORDER CODES



1 Model Name	HGP-3A	
2 Mounting	F	flange type
	L	foot type
3 Delivery Capacity	2, 3, 4, 6, 8, 11, 13, 14, 17, 19, 23, 25, 28, 30, 33, 35	
4 Rotation Direction	R	clockwise
	L	counter - clockwise
	M	hydraulic motor *
5 Shaft Type	X	straight shaft
	Y	spline shaft
	Z	taper shaft
6 Flange Mounting Type	2B	SAE 2-bolt
	4BD	DIN 4-bolt
	4BE	European 4-bolt

* Please contact the local distributors to obtain the specifications of hydraulic motors.

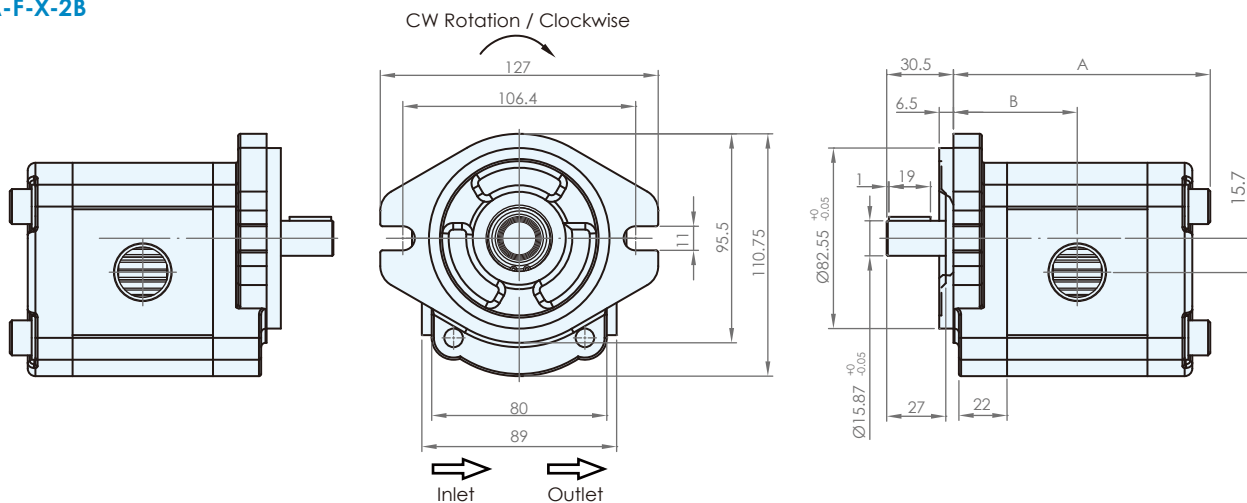
SPECIFICATIONS

Model	Accurate Displacement Capacity (cc/rev)	Operational Pressure (kgf/cm ²)	Max. Pressure (kgf/cm ²)	Speed (r.p.m.)			Ports Size (PT)		Weight (kg)
				Rate	Max.	Min.	Inlet	Outlet	
HGP-3A-2	2	210	250	1800	4000	700	3/4"	1/2"	2.19
HGP-3A-3	3	210	250	1800	4000	700	3/4"	1/2"	2.23
HGP-3A-4	4	210	250	1800	4000	700	3/4"	1/2"	2.29
HGP-3A-6	6	210	250	1800	4000	700	3/4"	1/2"	2.37
HGP-3A-8	8.4	210	250	1800	3500	700	3/4"	1/2"	2.45
HGP-3A-11	11	210	250	1800	3000	600	3/4"	1/2"	2.60
HGP-3A-13	13	210	250	1800	3000	600	3/4"	1/2"	2.70
HGP-3A-14	14.3	210	250	1800	3000	500	3/4"	1/2"	2.76
HGP-3A-17	16.5	210	250	1800	3000	500	3/4"	1/2"	2.87
HGP-3A-19	19.2	210	250	1800	3000	500	3/4"	1/2"	2.99
HGP-3A-23	23	210	250	1800	3000	500	3/4"	1/2"	3.19
HGP-3A-25	25	175	210	1800	2800	500	1"	3/4"	3.24
HGP-3A-28	28	175	210	1800	2500	500	1"	3/4"	3.35
HGP-3A-30	30	175	210	1800	2500	500	1"	3/4"	3.45
HGP-3A-33	33	140	175	1200	2500	500	1"	3/4"	3.60
HGP-3A-35	35	125	140	1200	2500	500	1"	3/4"	3.71

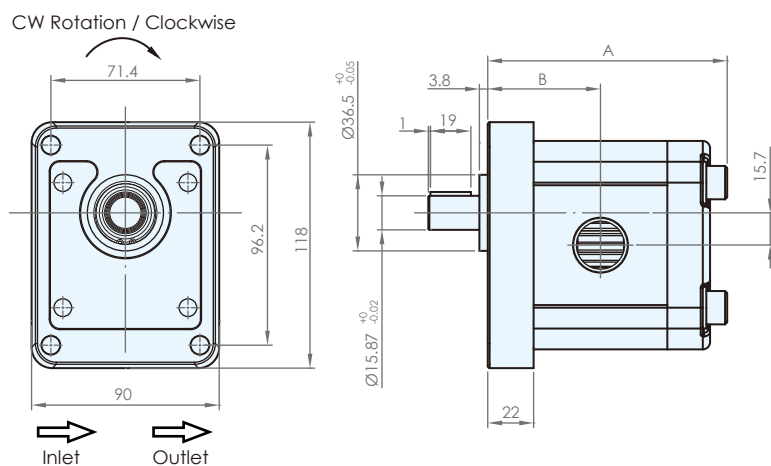
HGP Series Gear Pump

DIMENSIONS (unit : mm)

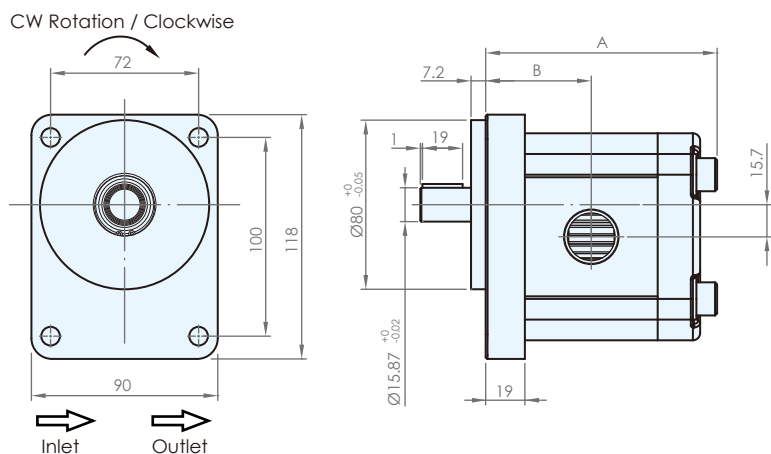
HGP-3A-F-X-2B



HGP-3A-F-X-4BE



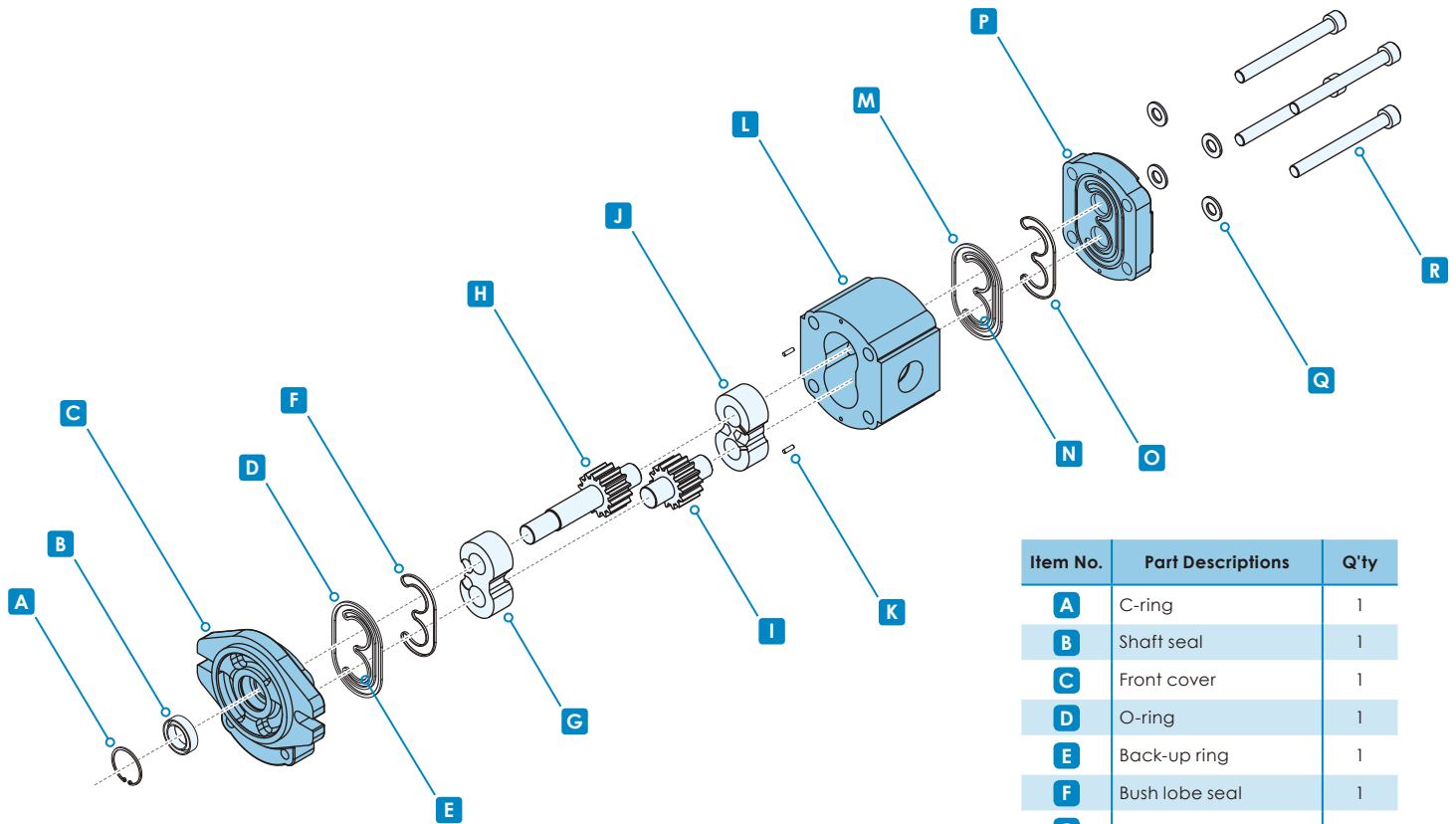
HGP-3A-F-X-4BD



Model	A	B
HGP-3A-2	97.4	46.7
HGP-3A-3	99	47.5
HGP-3A-4	101	48.5
HGP-3A-6	105	50
HGP-3A-8	109	51.5
HGP-3A-11	113	54
HGP-3A-13	117	56
HGP-3A-14	119	57
HGP-3A-17	123	59
HGP-3A-19	127	61
HGP-3A-23	134	65
HGP-3A-25	137	66
HGP-3A-28	141	68
HGP-3A-30	145	70
HGP-3A-33	150	73
HGP-3A-35	154	75

HGP Series Gear Pump

DECOMPOSITION CHARTS

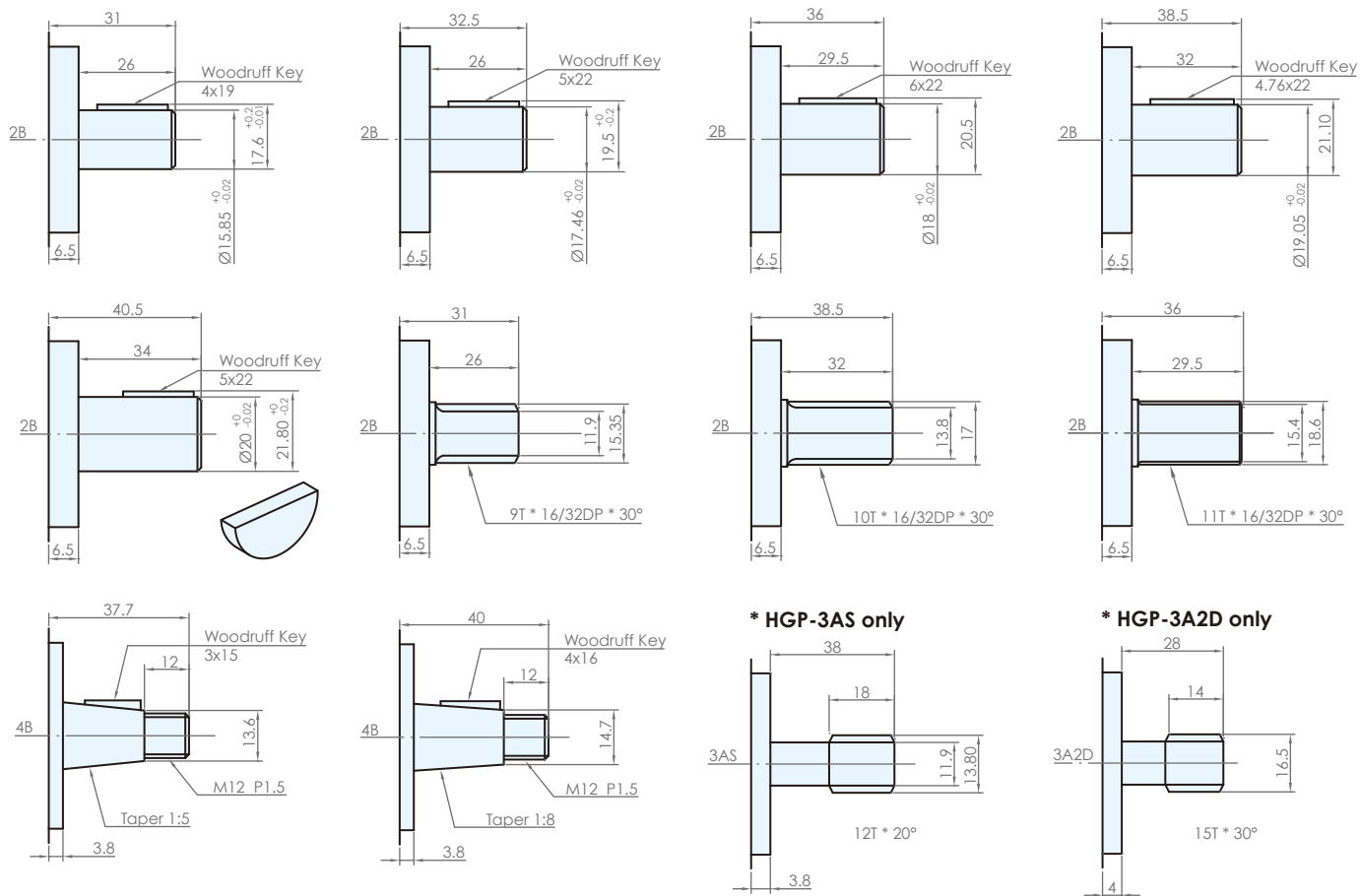


Item No.	Part Descriptions	Q'ty
A	C-ring	1
B	Shaft seal	1
C	Front cover	1
D	O-ring	1
E	Back-up ring	1
F	Bush lobe seal	1
G	Matching bearing	1
H	Drive gear	1
I	Drive gear	1
J	Matching bearing	1
K	Lock pin	2
L	Housing	1
M	O-ring	1
N	Back-up ring	1
O	Bush lobe seal	1
P	Rear cover	1
Q	Bolt washer	4
R	Bolt	4

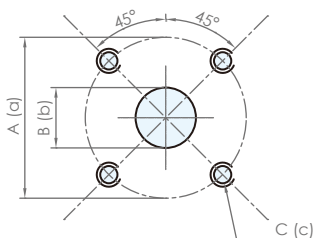
HGP Series Gear Pump

ADDITIONAL DIMENSION (unit : mm)

Dimension of Shaft

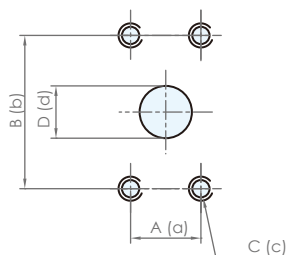


Inlet and Outlet Size



Flange Type

Inlet			Outlet		
A	B	C	a	b	c
40	18.5	M6	35	14.5	M6
40	18.5	M6	40	14.5	M6
40	18.5	M8	30	14.5	M6



Flange Type

Inlet				Outlet			
A	B	C	D	a	b	c	d
17.48	38.1	5/16"-18UNC	14.5	17.48	38.1	5/16"-18UNC	14.5
22.23	47.63	3/8"-16UNC	18.5	17.48	38.1	5/16"-18UNC	14.5
26.2	52.4	3/8"-16UNC	24	22.23	47.63	3/8"-16UNC	18.5

* UNC : Unified Coarse Thread

G, BSP, PF

Inlet	Outlet
A	a
G 1/2"	G 1/2"
G 3/4"	G 1/2"
G 1"	G 3/4"

UNF

Inlet	Outlet
A	a
1 1/16"-12UN	7/8"-14UNF
1 5/16"-12UNF	1 1/16"-12UN

